

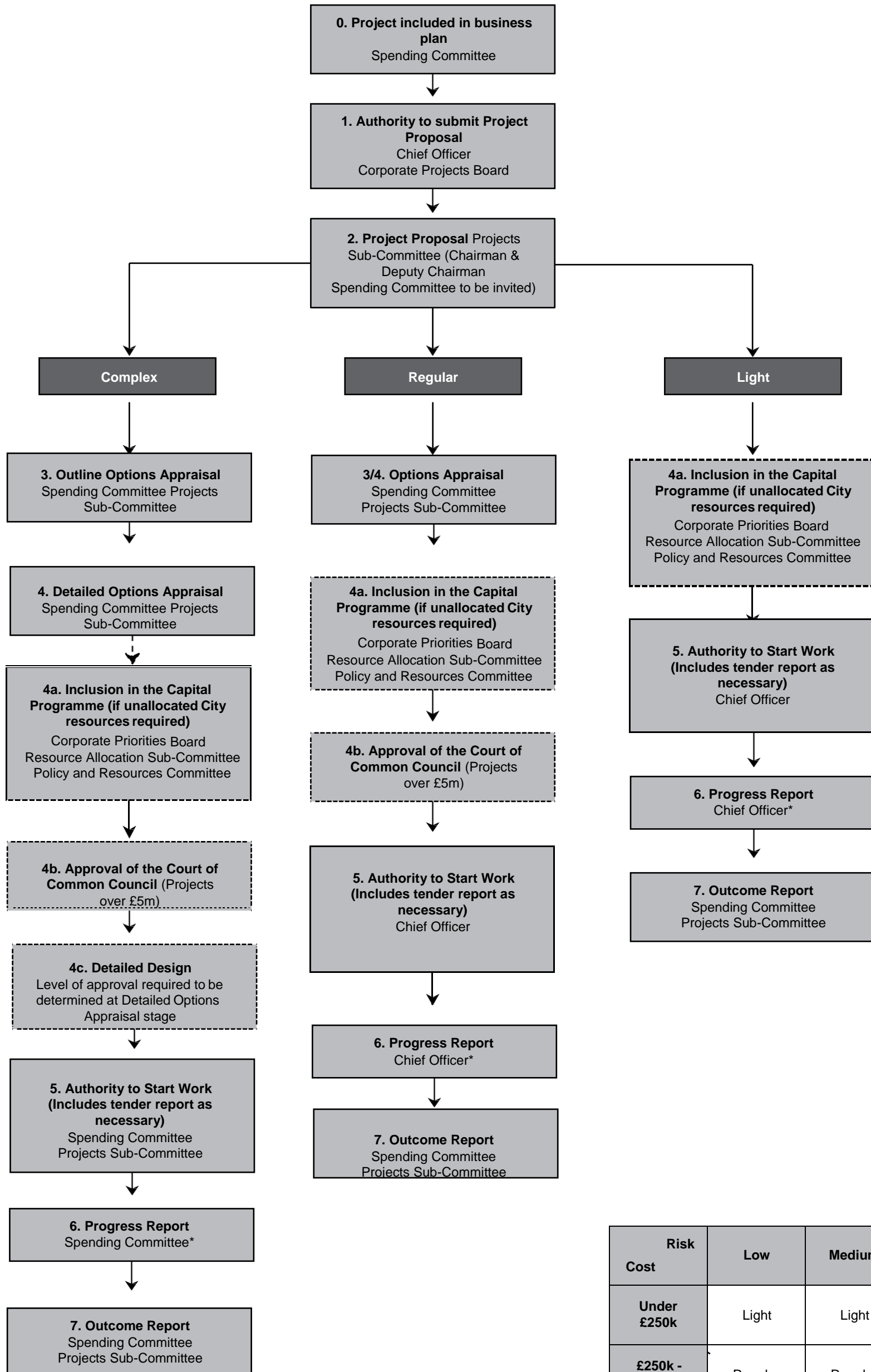
Gateway Approval Process

The procedure applies to projects that result in tangible, physical deliverables (including IS projects) in the following categories.

Capital and Supplementary Revenue projects (including those within agreed strategies) >£50k

Routine Revenue projects >£250k

Capital and Supplementary Revenue projects delivered with ringfenced funds >£250k



Risk	Low	Medium	High
Cost			
Under £250k	Light	Light	Regular
£250k - £5m	Regular	Regular	Complex
Over £5m	Regular	Complex	Complex

* Projects Sub Committee regularly reviews the whole programme of projects

